



HUTTON HOTEL

1808 WEST END AVE NASHVILLE TENNESSEE 37203

HOTEL FEATURES AND AMENITIES

GUEST SERVICES

- Twice Daily maid service
- Concierge services
- Paperless check-in
- Business Center services with 24 hour access
- On-line sundry shop
- Same day valet laundry service
- Newspaper selection at check-in
- GPS units for walking/jogging or driving complimentary upon request
- Sewing Kit
- Hand Held Steamer
- Spray wrinkle remover and starch
- Heating Pad
- Shoe shine

FITNESS

- State of the art fitness center
- Pre-Cor cardio equipment with integrated LCD panels
- Espresso bicycles with virtual reality routes
- Free weights
- Paramount strength training machines
- Running and walking maps – cool down towels and water
- Jogging strollers available
- In-Room options
- Adjustable dumbbells
- Fitness Videos – Yoga, Pilates

IN-ROOM DINING

Enjoy the fine fare of 1808 Grille in the privacy and comfort of your room. With 24 hour service, we are ready when you are. Healthy options and special requests always available.

Lobby Express – A java bar with fresh baked goods, healthy snacks and drinks to enjoy in our lobby or ready to go with you.

SPA SERVICES

2 private, treatment rooms available with a wide range of services

In-Room – Extensive menu of treatments available in the comfort of your room

GUEST ROOMS AND SUITES

- 248 total available
- 2 Presidential Suites
- 50 King Suites
- 12 Executive King Rooms
- 136 Deluxe King Rooms
- 11 Deluxe Queen Rooms
- 37 Deluxe Queen / Queen Rooms



HUTTON HOTEL

1808 WEST END AVE NASHVILLE TENNESSEE 37203

GUEST ROOM FEATURES AND AMENITIES

- Flat panel LG High Definition television
- LG Jack Pack – A multi-media interface to the in-room TV display panel. Plug in your MP3 player, laptop, camera or camcorder and enjoy the images and sounds through the flat panel television.
- Refreshment center and snack drawer
- On-demand video
- High-speed wired and wireless internet access
- Complimentary gourmet coffee and tea
- Two line telephone with voicemail & customizable greeting
- Luxurious bed linens
- Safe capable of storing a laptop
- Iron and board
- Pets welcome
- GUEST BATHS**
- Granite flooring and shower surround
- Glass vanity with integral bowl
- Rain shower head
- Luxurious oversized bath sheets and towel
- LED magnifying make up mirrors
- Hair dryers
- Terrycloth robes and slippers

ROOMS OF DISTINCTION

2 Sensory Deluxe Rooms

King Rooms enhanced with state of the art Audio and Video equipment:
50" flat screen TV with Jack Pack multi media input device. Enjoy your MP3 player, camcorder, video or pictures on our 50" monitor with convenient plug in options.
Complete surround sound package
Custom Theatre chairs
Blue Ray DVD player.
Wii player

7 Cardio Deluxe Rooms

King Rooms equipped with either a Pre-Cor Elliptical, Treadmill or Bicycle
Yoga mats
Selection of Fitness videos
Adjustable dumbbells

2 Conference Suites

Stay and meet in the same room for your small meetings
State of the art meeting facility with Boardroom for 12 people
50" flat panel for presentations
Audio or Video Conferencing services available
Complete Food and Beverage service

2 Presidential Suites

1,458 or 1,175 square feet
One-Bedroom King Suite
Master bedroom with private bathroom

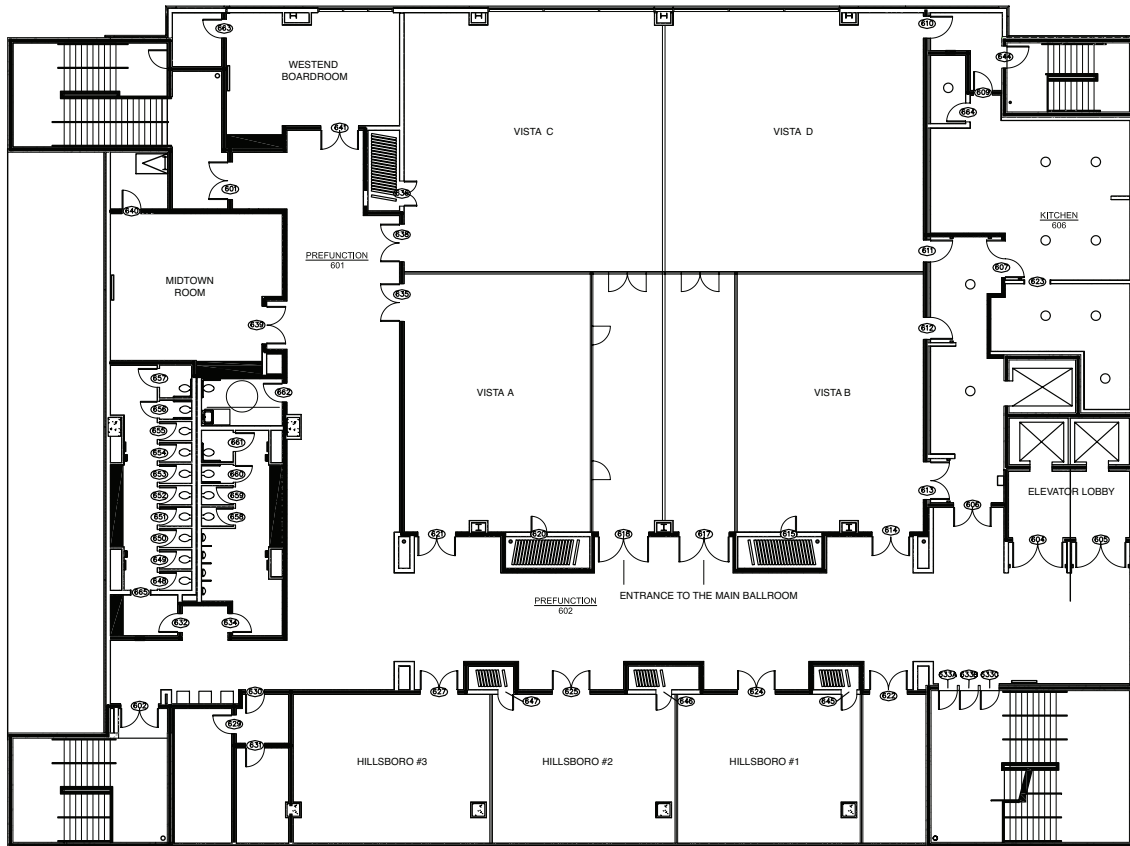
MEETINGS, WEDDINGS, AND SPECIAL EVENTS

- 13,600 square feet of elegantly-appointed event space
- 7,000-square-foot Ballroom with panoramic windows overlooking downtown Nashville.
- Nine flexible meeting rooms
- Executive Boardroom
- State-of-the-art fiber optic, electrical, lighting and sound systems
- High-speed Internet access (wired and wireless)
- Conference concierge to assist with all of your meeting needs.
- PARKING**
- Valet parking for individual guests or function attendees
- 300 space, fully automated self-park garage below the function space and connected to the Hotel



HUTTON HOTEL

1808 WEST END AVE NASHVILLE TENNESSEE 37203



FUNCTIONS AND MEETING CAPACITY

ROOM NAME	SIZE (FEET)	AREA (SQ. FT)	CEILING (FT, IN)	ROUNDS OF 10	THEATER	CONF.	RECEP.	CLASSRM 3 PER 6'	U-SHAPE	HOLLOW SQUARE
West End Boardroom	18' x 24'	486	11'			16				
Mid Town Room	27' x 23'	621	11'	40	60	26	50	39	26	30
Hillsboro 1	39' x 24'	936	13'	60	72	36	65	54	29	35
Hillsboro 2	29' x 24'	696	13'	50	56	30	55	42	24	30
Hillsboro 3	31' x 24'	744	13'	50	56	30	55	42	24	30
Hillsboro	100 x 24'	2400	13'	160	208	40	165	132	81	87
Vista Ballroom A	41' x 30'	1230	17'	80	146	42	120	84	30	46
Vista Ballroom B	41' x 30'	1230	17'	80	146	42	120	84	30	46
Vista Ballroom C	41' x 41'	1681	17'	120	220	54	160	105	36	58
Vista Ballroom D	41' x 41'	1681	17'	120	220	54	160	105	36	58
Vista Ballroom	83' x 83'	7000	17'	500	500	80	500	450	93	126